


PERSONAL NAVIGATOR



Sunrise: 7:04 a.m. Sunset: 6:56 p.m.,

Evening Attire: Cruise Casual

Wednesday: Sunny High: 82°F/28°C

Thursday: Partly Sunny High: 80°F/27°C

WEDNESDAY, OCTOBER 3, 2012

DAY AT SEA

Disney's Believe



Genie from Aladdin and many of Disney's most-beloved magic makers take a father on a magical journey to show him that anything is possible if you just believe.

WALT DISNEY THEATRE
Decks 3 & 4, Forward
6:15 & 8:30 P.M.



Assistance available at the entrance to the Walt Disney Theatre 30 minutes prior to show time.



Disney Dream Fun Facts

Tonnage: 129,690

Height: 66.13 m (217 feet)

Length: 339.8 m (1114.7 feet)

Important Dates

Name Announcement: March 2009

Steel Cutting: March 2009

Keel Laying: August 2009

Delivery: December 2010

Did you know?

The Sorcerer Mickey Mouse on the Disney Dream's stern is about 14 feet long. Constructed of stainless steel and fiberglass, it weighs approximately 2,500 pounds.

SEA YA' REAL SOON!

Mickey and some of his Disney friends, invite you to join them in the ship's Atrium. You won't want to miss this very special farewell meet and greet.

Bring your cameras!
4:15 & 10:15 p.m.
Lobby Atrium,
Deck 3, Midship

Don't Miss:

Anyone Can Cook

D Lounge, Deck 4, Midship

11:00 a.m., Families - Apple Strudel

3:00 p.m., Adults - Lobster Ravioli

From our galley to yours; join our chefs as they show you how to prepare some delicious dishes.

Jack-Jack's Incredible Diaper Dash

Lobby Atrium, Deck 3, Midship - 11:30 a.m.

Calling all baby cruisers! The Disney Dream's babies take to the mat to see who's the fastest crawler on the seven seas!

Captain's Signing

White Caps, Deck 3, Forward - 12:15 p.m.

Come and have your Disney Dream merchandise signed by the Master of the Disney Dream, Captain Henry.

Cruise Staff Farewell

Evolution (18+), Deck 4, Aft - 11:15 p.m.

Join your Club Host, Franky, and the Cruise Staff team and see our version of the funniest skit on the high seas, "If I Were Not Upon The Sea."

Debark Talk Broadcast

Your Cruise Director, Clayton, presents important information, including U.S. Customs and Border Protection procedures. Tune in to Channel 5 of your stateroom TV. Please place your luggage outside your stateroom between 8:30 - 10:30 p.m.

Thank you in advance for completing your comment card.



Visit The Future Cruise Desk Early Today

Please visit the Future Cruise Desk, Deck 4, Midship, as early as possible today. The last day of the cruise tends to get busy in the evening, and we want to be sure you have the opportunity to save 10% on your next cruise, receive up to a \$200 onboard credit, and pay a reduced deposit! Tune to Channel 8 for details.

DINNER MENU

Animator's Palate: Pacific Rim Crusine
Enchanted Garden: Continental Market
Royal Palace: French Dinner

DRINK OF THE DAY

High Tide (Alcoholic)
Princess Delight (Non Alcoholic)

IMPORTANT NUMBERS

Fire/Security: 7-3001
Medical Emergency: 7-3000
Health Center: 7-1923

FAMILY ACTIVITY HIGHLIGHTS



WAKE UP WITH DISNEY JUNIOR

D Lounge, Deck 4, Midship - 9:00 a.m.

What happens when you experience unlimited fun with your favorite Disney Junior shows? An exciting dance party designed especially for pre-schoolers ages seven and under.

MAKING OF THE DREAM

Evolution, Deck 4, Aft - 9:30 a.m.

Explore the origins of Disney Cruise Line - and the latest and greatest innovations conjured especially for the Disney Dream, in this fascinating and entertaining behind-the-scenes program.

DISNEY VACATION CLUB® GROUP PRESENTATION

Evolution, Deck 4, Aft - 12:30 p.m.

Want to learn more about taking magical vacations year after year? Stop by our interactive group presentation to find out more information from a Disney Vacation Club representative.

DISNEY ANIMATION: CREATING A CHARACTER

D Lounge, Deck 4, Midship - 1:00 p.m.

Go behind the scenes at Walt Disney Animation Studios and learn the principles that make animation work, and try your hand at creating your own easy animation demonstration in this fun and fascinating enrichment program.

ANIMAL TOWEL FOLDING

D Lounge, Deck 4, Midship - 2:00 p.m.

Join our Housekeeping team as they show you the secrets of transforming an ordinary bath towel into a cute animal!

MICKEY 200

Evolution, Deck 4, Aft - 3:00 p.m.

Does your family have what it takes? Can a carrot and a potato be turned into the fastest hot-rod on the seven seas? Find out in the Mickey 200. Limited availability.

OFFICER PIN TRADING

Lobby Atrium, Deck 3, Midship - 7:30 p.m.

Your chance to come and trade pins with the officers of the Disney Dream.

FAMILY DREAM QUEST

D Lounge, Deck 4, Midship - 9:45 p.m.

Enjoy the wildest and wackiest scavenger team event on the seven seas!



ADULT ACTIVITY HIGHLIGHTS

SENSES SPA SEMINARS

Body Sculpt Boot Camp (Fee Applies) - Goofy's Sports Deck, 7:30 a.m.

Wake Up & Stretch Class - Senses Fitness Center, 8:00 a.m.

Detox for Health & Weight Loss - Senses Spa & Salon, 10:00 a.m.

Seminar: Acupuncture for Pain Management - Senses Spa & Salon, 11:00 a.m.

Good Feet Seminar: Walking in Comfort - Senses Spa & Salon, 12:00 p.m.

Seminar: How to Increase Your Metabolism - Senses Spa & Salon, 2:00 p.m.

Group Cycling (Sign-Up Required) - Senses Fitness Center, 4:00 p.m.

Pathway to Yoga - Senses Fitness Center, 5:00 p.m.



BEVERAGE SEMINARS AT SEA

Champagne Tasting - Pink, 12:15 p.m.

Wine Tasting - Pink, 1:30 p.m.

Tequila and Margarita Tasting - Skyline, 3:30 p.m.

Martini Tasting - Meridian, 4:00 p.m.

Whiskey Tasting - Meridian, 9:00 p.m.

Cognac Tasting - Meridian, 10:30 p.m.

Please make reservations for tastings at Guest Services for a nominal fee. Tastings are for Guests 21 and over.



LUNCH

Royal Palace, Deck 3, Midship - 12:30 p.m.

JENGA CHALLENGE

687, Deck 4, Aft - 5:00 p.m.

FAREWELL

Evolution, Deck 5, Aft - 10:15 p.m.

50 MOVIE QUOTES TRIVIA

687 Pub, Deck 4, Aft - 10:45 a.m.

"Life is like a box of chocolates"...know the movie? Then join your Club Host, Franky, as he tests your movie quote knowledge.

(Join Franky for 50 More Movie Quotes Trivia tonight in 687 Pub at 7:15 p.m.)

SINGLE'S LUNCH

Royal Palace, Deck 3, Midship - 12:15 p.m.

Single, single parent, or travelling alone? Join your Cruise Staff for an informal lunch.

X-BOX CHALLENGE

687 Pub, Deck 4, Aft - 5:30 p.m.

Come join your fellow cruisers and challenge their X-Box skills to your own.

CRUISE STAFF FAREWELL

Evolution, Deck 4, Aft - 11:15 p.m.

Join your Club Host, Franky, and the Cruise Staff team and see our version of the funniest skit on the high seas, "If I Were Not Upon The Sea."

\$10,000 MEGA JACKPOT BINGO

Buena Vista Theatre, Decks 4 & 5, Midship

Card Sales - 10:45 a.m. Game Starts - 11:00 a.m.

Join us for four cash prize games. If you cover your card in 46 numbers or less on the final game, \$10,000 could be yours! If not, we will still be playing for the HIGHEST cash prize of the session.

FINAL JACKPOT BINGO

**D Lounge,
Deck 4, Midship
Card Sales - 3:30 p.m.**

Game Starts - 4:00 p.m.

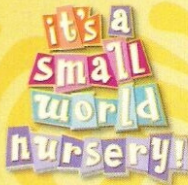
Join your Cruise staff team for our Final Session of Bingo! Cash Prize games and the Snowball Jackpot continues to grow and is Guaranteed to be won today!



YOUTH ACTIVITIES HIGHLIGHTS

DINE & PLAY

A convenience for families dining at 8:15 p.m., our Youth Activities Counselors will be available at 9:15 p.m. at the entrance of Royal Palace, Enchanted Garden and Animator's Palate dining rooms to bring registered children to join the fun in the Youth Activity areas.



Deck 5, Midship (7-5864) 9:00 a.m. - 12:00 a.m.

OPEN HOUSE

8:00 - 9:00 a.m.

Your chance to see our toddler space, It's A Small World Nursery.



Deck 5, Midship (7-1440) 9:45 a.m. - 12:00 Mid
(3 - 12 years old)

PUZZLE PLAYTIME

9:45 a.m.

Come and play with Mickey & friends as they share their favorite games, puzzles and dances!

BIG TOP FUN FEST

7:30 p.m.

It's the greatest show on Earth. Come re-discover the circus Disney style with clowns, jugglers and classic Disney cartoons.



Deck 5, Midship (7-1445) 9:00 a.m. - 12:00 a.m.
(3 - 12 years old)

MONSTER'S, INC. OPEN "MIKE" NIGHT

6:15 p.m.

The Monsters of Monstropolis have all lost their voices and it's up to YOU to save the day. Participate in Mike Wazowski's Comedy School and a special show to help collect enough laughs to power up the city.

STITCH'S ADVENTURE SQUAD

7:45 p.m.

Stitch, everyone's favorite alien, is making an appearance to share some of his mischievous games and activities.



Deck 13, Midship (7-9743) 10:00 a.m. - 12:00 a.m.
(11 - 14 years old)

SUPER SLOPPY SCIENCE

11:30 a.m.

Join Professor Make-O-Mess in some of the most extreme experiments you will ever see in the world of Super Sloppy Science!

GHOST VOYAGERS

8:30 p.m.

The ship has come upon some mysterious waters and strange things are afoot. Join a team of paranormal experts to help investigate the area and track down any evidence of ghostly beings on the ship.



Entrance on Deck 4, Forward (7-9417)
11:00 a.m. - 1:00 a.m.
(14 - 17 years old)

DREAM FACTOR

3:00 p.m.

Time to see if you are up to the challenge for one of the toughest competitions onboard. Prepare yourself for "Dream Factor."

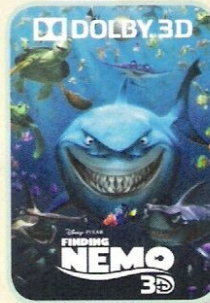
ZOMBIFIED PREMIERE

11:00 p.m.

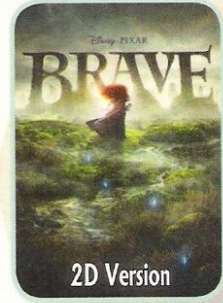
Join the producer to watch the preview of the final version of the film and join us for a celebration party.

BUENA VISTA THEATRE

Today's Movies



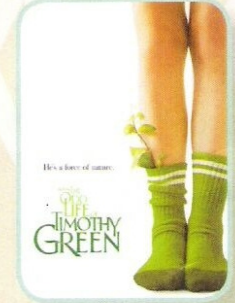
8:30 a.m. & 1:00 p.m.
Runtime: 1 hr 30 min
Rating: G



3:00 p.m.
Run Time: 1 hr 31 min
Rating: PG



5:00 & 8:15 p.m.
Run Time: 2 hr 26 min
Rating: PG-13

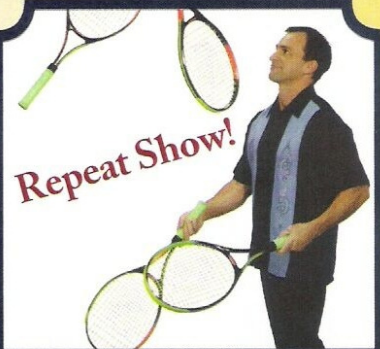


11:00 p.m. - **OC**
Run Time: 1 hr 40 min
Rating: PG



Find out what's HOT at this new dance party, featuring great Disney music, family dances, and a chance to win awesome prizes!

D Lounge,
Deck 4, Midship
10:15 p.m.



ADULT CABARET

Featuring the
Physical Comedy of
Max Winfrey,
as he entertains you in this
adult cabaret-style show.
Evolution (18+), Deck 4, Aft
10:45 p.m.

YOUTH ACTIVITIES OPEN HOUSE

Open House is an opportunity for all to come and participate in a variety of exciting activities and free time in the Oceaneer Club, Lab, Edge & Vibe throughout the cruise. During these times secured programming will still be offered in the other venue for those looking to check their children into care.

MORE TO ENJOY WHILE ONBOARD



PLAN YOUR NEXT CRUISE

Please visit the Future Cruise Desk, Deck 4, Midship, as early as possible today. We want to be sure you have the opportunity to save 10% on your next cruise, receive up to a \$200 onboard credit, and pay a reduced deposit! Tune to Channel 8 for details.



DISNEY VACATION CLUB® GROUP PREVIEW

Want to learn more about taking magical vacations year after year? Please see a Disney Vacation Club representative on Deck 4, Midship, or call 7-2805 from your stateroom phone for more information about our interactive group presentation.



MIDSHIP DETECTIVE AGENCY

Use your detective know-how and our special detective "badge" to search the ship and catch your criminal! Deck 5, Midship Kiosks.



SENSES
SPA & SALON

SPA TOPIA SEA DAY SPECIAL

Full body salt exfoliation, Hot Stone massage on the back neck and shoulders, mini facial, foot & ankle massage and scalp massage
\$135 for 75 minutes. 4:00 p.m. – 9:00 p.m. only

Senses Spa, Deck 11, Forward, Ext 7-1465

PROVENANCE SILVER & LARIMAR COLLECTIONS

Experience handmade silver jewelry that is sure to inspire. This collection will provide you with a million dollar look without a million dollar price. Come see Larimar, a rare stone from the Dominican Republic formed from volcanic ash. A blue stone reminiscent of the ocean set in exquisite silver jewelry, it combines the strength and beauty of nature with the elegance of self-expression.

Deck 3, Forward

Shutters GET THE PICTURE

Grand Staircase – Groups accommodated

Lobby Atrium, Deck 3, Midship
5:00 p.m. – 6:30 p.m.

Create a personal storybook of your cruise to share with family and friends. Photobook orders close at 10:00 p.m.

*Please note that photos are available for viewing on our interactive photo kiosks approximately three hours after being taken and are only available for purchase during this cruise.

EXPRESS WALK-OFF

Guests now have the option to take your luggage off the ship at your leisure once the ship has been cleared by the local authorities. You do not need to wait for your luggage to enter the terminal and there is no need to claim it inside the terminal building. Please note that no assistance with luggage is provided for this option.

SURF @ SEA

\$0.75 per minute, or save money by buying blocks of time. \$27.50 for 50 minutes, \$40 for 100 minutes and \$75 for 250 minutes. Wireless information sheets are available at Guest Services, Deck 3, Midship. **Please note: Due to satellite connectivity, onboard internet service will be noticeably slower than you may be accustomed to and may at times be interrupted or unavailable.**

ON DEMAND TV

Watch Disney movies, Hollywood features, ABC Shows, and even captioned content, plus much more "On Demand" for FREE in the comfort of your stateroom! Bookmark your movie and come back to watch it later. Press MENU on your stateroom television remote control and follow the prompts.

SHOPPING

CAPTAIN'S SIGNING

Come and have your Disney Dream merchandise signed by the Master of the Disney Dream, Captain Henry. White Caps, Deck 3, Forward, 12:15 p.m.

POOLSIDE SHOPPING

Whozits & Whatzits and Quacks Starboard Side are the shopping locations for all of your poolside needs. Aquaduck merchandise available at Whozits & Whatzits, Deck 11, Midship.

GOING ONCE, GOING TWICE, YOURS!

The silent auction closes tonight at 6:00 p.m. Make sure you come place a bid on your favorite pieces or purchase pieces available by one of our Disney artists. Artist signings today will feature Joe Kaminski in White Caps at 10:00 a.m. and Noah in the Vista Gallery at 3:30 p.m. White Caps, Deck 3, Forward and Vista Gallery, Deck 4, Midship.

INDULGE IN LUXURY WITH GODIVA

Direct from Belgium and now available on the Disney Dream, enjoy the chocolate bliss of Godiva. For all chocolate lovers this is a must have journey for your taste buds. Your indulgent destination is Whitecaps, Deck 3, Forward.

LAST CHANCE OPPORTUNITY

Available on purchases in the merchandise locations onboard, while supplies last. With every \$25.00 spent, you can purchase a Disney Cruise Line striped tote for \$17.95. With every \$30.00 spent, you can purchase a Disney Cruise Line watch for \$16.95.

TAX AND DUTY FREE

Tax and duty free shopping right here onboard! A great range of jewelry, fragrances, and liquor at competitive prices. Buy onboard and we will package it safely for your journey home. White Caps, Deck 3, Forward.

IMPORTANT INFORMATION

Security Notice

All Guests (including children) who wish to disembark the ship are required to present their Key to the World card at the gangway. A photo ID is also required for those Guests who are 18 years of age or older. Guests under the age of 18 are required to have a Parent, Guardian or other responsible adult sign an authorization form at the time it is given out if they wish to go ashore unaccompanied. Authorization forms are available at the gangways and Guest Services.

Please Note:

Please remember to use plenty of sunscreen and mosquito repellent when venturing ashore.

Cold and Flu Reminder

Please wash hands frequently and thoroughly; particularly before meals. Contact the Health Center by dialing 7-1923, should anyone in your party become ill.

Corridor Quiet Hours

As a courtesy to all our Guests, please recognize quiet hallway hours from 10:00 p.m. til 8:00 a.m.

Inclement Weather

For the safety of all Guests, outdoor events may be changed due to unforeseen weather conditions.

Environmental Message

With Disney's commitment to the Environment, please refrain from throwing anything over the Ship's side. Thank you!

No Reserved Seats Policy

As a courtesy to all our Guests, we kindly advise that the saving of seats is not permitted in the Walt Disney Theatre, and the saving of the sun loungers is not permitted on Deck 11, 12, and 13. Items left unattended will be returned to lost and found at Guest Services, Deck 3 Midship.

Smoking

For the comfort of our guests the following areas are designated as Smoking areas:
-Deck 13, Forward, port side, by "Currents"
-Deck 12, Aft, port side outdoor area that is accessible through the Meridian Lounge
-Deck 4, Aft, port side from 6:00 p.m. to 6:00 a.m. only (all of Deck 4 is no smoking from 6:00 a.m. to 6:00 p.m.)
-Smoking is permitted on stateroom verandahs. Smoking is prohibited inside all guest staterooms. Guests found smoking in their staterooms will be charged a \$250 stateroom recovery fee.

Walt Disney Theatre

Theatrical performances may use artificial fog, strobe lights, pyrotechnics and other special effects. For the safety of our performers and the comfort of those around you, the use of any photography, video recording device or any electronic equipment is prohibited.

Verandah Safety

Please do not leave any combustible materials on your balcony when not present in your stateroom for safety reasons.

DD/CL/4D/163/09_30.12/RB/©DISNEY

Morning	8:30	8:45	9:00	9:15	9:30	9:45	10:00	10:15	10:30	10:45	11:00	11:15	11:30	11:45	12:00	12:15	12:30	12:45	1:00	1:15	1:30
FUNNEL VISION	Fantasia 2000 (G) Funnel Vision					The Jungle Book (G) Funnel Vision					Virtual Tours		Guest DJ Christian Gama Spins by the Pool Deck 11, Midship								
MOVIES	Finding Nemo (G) Buena Vista Theatre										Finding Nemo (G) Buena Vista Theatre										
CHARACTER	Princess Gathering Lobby Atrium			Tinker Bell Lobby Atrium			Daisy Dk 4, Balcony		Tinker Bell Lobby Atrium			Dance Party Lobby Atrium			Stitch Dk 4, Balcony						
FUN FOR ALL AGES	Morning Walk Deck 4, Mid, Portside		Making of the Dream Evolution				Bingo Pre Sales		\$10,000 MEGA Jackpot Buena Vista Theatre			Captain's Signing White Caps		Disney Animation: Creating a Character D Lounge							
	Wake Up With Disney Jr. D Lounge		Family Crafts D Lounge						Anyone Can Cook D Lounge			Jack Jack's Diaper Dash Lobby Atrium		Disney Vacation Club Presentation Evolution							
	Magic Playfloor Oceaneer Club		Basketball Shootout Goofy's Sports Deck																		
ADULTS	Rise & Shine Club Cove Cafe		Art of the Theme Show Tour Meet at Meridian				50 Movie Quotes Trivia 687 Pub		Singles Lunch Royal Palace			TV Tune Trivia #1 687 Pub									
	Friends of Bill W. Outlook		Detox for Health & Weight Loss Senses Spa & Salon				Acupuncture for Pain Management Senses Spa & Salon		Good Feet Seminar Senses Spa & Salon			Club 18*21 Lunch Royal Palace									
VIBE	Youth Activities Open House						Open For Teens														
EDGE	Youth Activities Open House						Open for Tweens			Super Sloppy Science											
OCEANEER LAB												Lunch									
OCEANEER CLUB	Youth Activities Open House "Magic Playfloor" 9:00 a.m. - 9:30 a.m.												Lunch								

Symbol for activities that will be repeated during the cruise

+

FOLD

Afternoon	1:45	2:00	2:15	2:30	2:45	3:00	3:15	3:30	3:45	4:00	4:15	4:30	4:45	5:00	5:15	5:30	5:45	6:00	6:15	6:30	6:45
FUNNEL VISION	Classic Cartoons (G) Funnel Vision				Cinderella (G) Funnel Vision				Tinker Bell (G) Funnel Vision				Virtual Tours								
MOVIES	Brave (PG) - 2D Version Buena Vista Theatre								The Avengers (PG-13) Buena Vista Theatre												
CHARACTER				Mickey Dk 4, Balcony						Mickey Dk 4, Balcony			Peter Pan Lobby Atrium								
FUN FOR ALL AGES	Movie Special: The Odd Life of Timothy Green (PG) Walt Disney Theatre				Animal Towel Folding D Lounge				Mickey 200 Evolution (Limited Availability)		Bingo Pre Sales		FINAL Jackpot D Lounge		Family Karaoke D Lounge						
	Ultimate Disney Trivia 687 Pub				How To Increase Your Metabolism Senses Spa & Salon						Live Guitar with David Kenny Quiet Cove - Live Music		Martini Tasting (21+) Meridian (Pre Book/Nom Fee)		Group Cycling Senses Fitness Center		Live Guitar with David Kenny Quiet Cove - Live Music		18*21 Jenga Challenge 687 Pub		X-Box Challenge 687 Pub
ADULTS	DJ Training				Dream Factor				Pool Party				Sports Deck								
EDGE	Dream Factor								Sports Deck				Mini Golf								
OCEANEER LAB														Dinner							
OCEANEER CLUB																Dinner					

FOLD

Fold along the dotted lines and take me with you so you don't miss any of the fun!

FOLD

Evening	7:00	7:15	7:30	7:45	8:00	8:15	8:30	8:45	9:00	9:15	9:30	9:45	10:00	10:15	10:30	10:45	11:00	11:15	11:30	11:45	12:00						
FUNNEL VISION	Peter Pan (G) Funnel Vision					Virtual Tours					The Princess & The Frog (G) Funnel Vision					Angels in the Outfield (G) Funnel Vision											
MOVIES	The Avengers (PG-13) Buena Vista Theatre										The Odd Life of Timothy Green (PG) Buena Vista Theatre																
CHARACTER				Mickey Mouse Dk 4, Balcony																							
FUN FOR ALL AGES	Disney Princesses D Lounge			Officer Pin Trading Lobby Atrium						Family Dream Quest D Lounge						Family Superstar Karaoke D Lounge											
	Family Dance Party Evolution			Disney Trivia D Lounge			Walt Disney Theatre			The Dreamers LIVE Lobby Atrium - Live Music			Sea Ya' Real Soon Lobby Atrium														
ADULTS	50 More Movie Quotes Trivia 687 Pub			Live Piano with Tom Scott District Lounge - Live Music			Live Music with Trilogy District Lounge - Live Music			Whiskey Tasting (21+) Meridian			Live Guitar with David Kenny Quiet Cove - Live Music			18*21 Farewell Evolution			80's Music Challenge Evolution			Max Winfrey Evolution - Physical Comedy			Cruise Staff Farewell and Evolution Nightclub Evolution		
VIBE	Youth Activities Open House					Pump It Up/Smoothies					Bring It!					Zombified Premiere											
EDGE						Ghost Voyagers					Info Swap					Farewell Dance Party											
OCEANEER LAB																											
OCEANEER CLUB																											

IN THE SPOTLIGHT SERIES

SOLVE IT! SERIES

JUMP! UP! SERIES

CREATE & INVENT SERIES

OPEN HOUSE

CLUBHOUSE SERIES

STORYBOOK SERIES

WEDNESDAY, OCTOBER 3, 2012 - DAY AT SEA

BUENA VISTA THEATRE



FINDING NEMO
8:30 a.m. & 1:00 p.m.
Run Time: 1 hr 30 min
Rating: G



BRAVE
3:00 p.m.
Run Time: 1 hr 31 min
Rating: PG



THE AVENGERS
5:00 & 8:15 p.m.
Run Time: 2 hr 26 min
Rating: PG-13



IN THE HEART OF THE SEA
11:00 p.m.
Run Time: 1 hr 40 min
Rating: PG

Character Appearances

PRINCESS GATHERING
Lobby Atrium - 9:00 a.m.

MINNIE MOUSE
Deck 4, Balcony - 9:15 a.m. & 10:15 a.m.
Lobby Atrium - 7:30 p.m.

TINKER BELL
Lobby Atrium
9:30 a.m., 11:00 a.m.

DAISY DUCK
Deck 4, Balcony - 9:45 a.m. & 10:45 a.m.

CHARACTER DANCE PARTY
Lobby Atrium - 12:15 p.m.

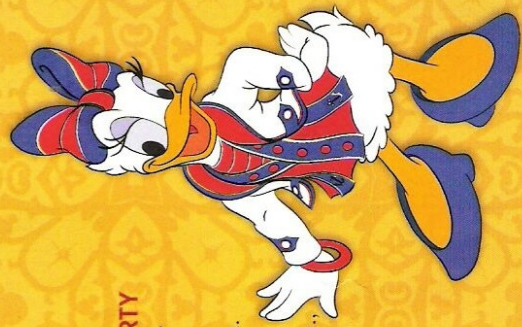
STITCH
Deck 4, Balcony - 1:30 p.m.

MICKEY MOUSE
Deck 4, Balcony - 2:45 p.m., 5:15 p.m. & 7:30 p.m.

DISNEY FRIENDS MEET & GREET
Lobby Atrium - 2:30 p.m.

PETER PAN
Lobby Atrium - 5:30 p.m.

DISNEY PRINCESSES
D Lounge - 7:30 p.m.



For details of daily Disney character appearances, refer to the character line in on Navigator Grid, or the digital character board in the Lobby Atrium.

YOUTH ACTIVITIES THEMED EXPERIENCES

CLUBHOUSE SERIES
focuses on movement and features content which appeals to younger children.

STORYBOOK SERIES
is designed with a strong connection to the Disney classic stories.

JUMP UP! SERIES
includes large ground games & movement-oriented activities.

CREATE & INVENT SERIES
will have a tactile focus allowing children to create and admire their work.

IN THE SPOTLIGHT SERIES
focuses on children's stage presence with lots of activities and enthusiasm.

SOLVE IT! SERIES
are less active, but will challenge children with problem/solutions based activities.

OPEN HOUSE

Activities for families, adults and children of all ages to enjoy together.

SHIP DIRECTORY

YOUTH ACTIVITIES

DISNEY'S OCEANEER CLUB	DECK 5, Mid	9:45 A.M. - 12:00 MID.
DISNEY'S OCEANEER LAB	DECK 5, Mid	9:00 A.M. - 12:00 MID.
EDGE	DECK 13, Mid	10:00 A.M. - 12:00 MID.
VIBE	DECK 4, Fwd	11:00 A.M. - 1:00 A.M.
IT'S A SMALL WORLD NURSERY	DECK 5, Mid	9:00 A.M. - 12:00 MID.

RECREATION

AQUADUCK	DECK 12, Mid	9:00 A.M. - 12:00 MID.
BASKETBALL COURT	DECK 13, Aft	12:00 A.M. - 6:00 P.M.
DONALD'S POOL	DECK 11, Mid	6:00 A.M. - 12:00 MID.
GOLF/SPORTS SIMULATOR	DECK 13, Aft	9:00 A.M. - 6:00 P.M.
GOOFY & MAX'S MINI GOLF	DECK 13, Aft	8:00 A.M. - 8:30 P.M.
MICKY'S POOL	DECK 11, Mid	6:00 A.M. - 12:00 MID.
MICKY'S SLIDE	DECK 11, Mid	9:00 A.M. - 7:00 P.M.
MIDSHIP DETECTIVE AGENCY	DECK 5, Mid	8:00 A.M. - 11:00 P.M.
NEMO'S REEF	DECK 11, Mid	9:00 A.M. - 7:00 P.M.
QUIET GOWE POOL	DECK 11, Fwd	6:00 A.M. - 12:00 MID.
SENSES FITNESS CENTER	DECK 11, Fwd	6:00 A.M. - 10:00 P.M.

GENERAL INFORMATION

ARR-CADE	DECK 11, Aft	24 Hours
DISNEY VACATION CLUB	DECK 4, Mid	9:00 A.M. - 12:00 P.M. 2:30 P.M. - 10:00 P.M.
FUTURE CRUISE SALES DESK	DECK 4, Mid	9:00 A.M. - 12:00 P.M. 2:00 P.M. - 6:00 P.M. 7:00 P.M. - 11:00 P.M.
GUEST SERVICES	DECK 3, Mid	24 Hours
HAIR BRAIDING	DECK 11, Aft	8:00 A.M. - 9:30 P.M.
MEDICAL HEALTH CENTER	DECK 1, Fwd	9:30 A.M. - 11:00 A.M. 4:30 P.M. - 7:00 P.M.
PRELUDES	DECK 3, Fwd	5:45 P.M. - 6:30 P.M. 8:45 P.M. - 8:45 P.M.
SENSES SPA AND SALON	DECK 11, Fwd	8:00 A.M. - 10:00 P.M.
SHUTTERS PHOTO GALLERY	DECK 4, Mid	10:00 A.M. - 11:00 P.M.

SHOPPING

MICKY'S MAINSAIL	DECK 3, Fwd	9:00 A.M. - 11:30 P.M.
QUACKS (STARBOARD SIDE)	DECK 11, Mid	10:00 A.M. - 4:00 P.M.
SEA TREASURES	DECK 3, Fwd	9:00 A.M. - 11:30 P.M.
VISTA GALLERY	DECK 4, Mid	9:00 A.M. - 11:00 P.M.
WHITE CAPS	DECK 3, Fwd	9:00 A.M. - 11:30 P.M.
WHOZITS & WHAZITS	DECK 11, Mid	10:00 A.M. - 4:00 P.M. 7:00 P.M. - 10:00 P.M.

IMPORTANT NUMBERS

Fire/Security: 7-3001
Medical Emergency: 7-3000
Health Center: 7-1923

DINNER MENUS
Animator's Palate: Pacific Rim Cuisine
Enchanted Garden: Continental Market Cuisine
Royal Palace: French Dinner
Dining Times: 5:45 p.m. & 8:15 p.m.
Evening Attire: Cruise Casual

DINING & LOUNGES

APPETIZANT

CABANAS CONTINENTAL (Port Side)	DECK 11, Aft	7:00 A.M. - 7:30 A.M.
CABANAS	DECK 11, Aft	7:30 A.M. - 11:30 A.M.
ENCHANTED GARDEN	DECK 2, Mid	9:00 A.M. - 10:45 A.M.
ROYAL PALACE	DECK 3, Mid	8:00 A.M. - 9:30 A.M.

LUNCH

CABANAS	DECK 11, Aft	12:00 P.M. - 2:00 P.M.
FILMORE'S FAVORITES	DECK 11, Mid	11:00 A.M. - 6:00 P.M.
LUIGI'S PIZZERIA	DECK 11, Mid	11:00 A.M. - 6:00 P.M.
ROYAL PALACE	DECK 3, Mid	12:00 P.M. - 1:30 P.M.
TOW MATEI'S GRILL	DECK 11, Mid	12:00 P.M. - 6:00 P.M.

DINNER

ANIMATOR'S PALATE	DECK 3, Aft	5:45 P.M. & 8:15 P.M.
ENCHANTED GARDEN	DECK 2, Mid	5:45 P.M. & 8:15 P.M.
ROYAL PALACE	DECK 3, Mid	5:45 P.M. & 8:15 P.M.
PALO & RENY (18+)	DECK 12, Aft	6:00 P.M. - 9:00 P.M.
(RESERVATION REQUIRED & COVER CHARGE APPLICABLE. DIA #7-9734)		
TOW MATEI'S GRILL	DECK 11, Mid	6:00 P.M. - 11:00 P.M.

LATE NIGHT (SHACK)

Luigi's Pizzeria	DECK 11, Mid	9:30 P.M. - 12:00 A.M.
------------------	--------------	------------------------

ADDED FEATURES

BEVERAGE STATION	DECK 11, Aft	24 Hours
EYE SCREAM	DECK 11, Mid	11:00 A.M. - 12:00 A.M.
ROOM SERVICE	DIAL 0	Closes at 1:30 A.M.

ENTERTAINMENT - LOUNGES - BARS

Adults must be 21 and older to consume alcoholic beverages.

687 PUB	DECK 4, Aft	11:00 A.M. - 9:00 P.M.
687 PUB (18+)	DECK 4, Aft	9:00 P.M. - 12:30 A.M.
BON VOYAGE	DECK 3, Mid	9:00 A.M. - 11:00 P.M.
COVE BAR (18+)	DECK 11, Fwd	9:30 A.M. - 11:00 P.M.
COVE CAFE (18+)	DECK 11, Fwd	7:00 A.M. - 6:00 P.M.
COVE CAFE WINE BAR (18+)	DECK 11, Fwd	6:00 P.M. - 12:00 MID.
CURRENTS	DECK 13, Fwd	10:00 A.M. - 12:00 MID.
D LOUNGE	DECK 4, Mid	SHOWTIMES
DISTRICT LOUNGE	DECK 4, Aft	10:30 A.M. - 9:00 P.M.
DISTRICT LOUNGE (18+)	DECK 4, Aft	9:00 P.M. - 12:00 MID.
EVOLUTION (18+)	DECK 4, Aft	10:15 P.M. - 2:00 A.M.
FROZONE TREATS	DECK 11, Mid	11:00 A.M. - 11:00 P.M.
MERIDIAN (18+)	DECK 12, Aft	10:00 A.M. - 12:30 A.M.
OUTLOOK	DECK 14, Mid	SUNSET TIMES
PINK	DECK 4, Aft	5:00 P.M. - 12:30 A.M.
SKYLINE (18+)	DECK 4, Aft	5:00 P.M. - 12:30 A.M.
VISTA CAFE	DECK 4, Mid	7:30 A.M. - 11:00 P.M.
WAVES	DECK 12, Aft	10:00 A.M. - 7:00 P.M.

Consumers who order raw or partially cooked, ready-to-eat food of animal origin, are hereby informed that the food is not sufficiently cooked to ensure its safety.

PRINCESS GATHERING
Don't miss your chance to see this Royal gathering today in the Lobby Atrium.
9:00 a.m.



CHARACTER DANCE PARTY
Put your dancing shoes on and join some of your favorite Disney Friends in the Lobby Atrium, Deck 3, Midship for fun and dancing.
12:15 p.m.